

DAN PATCH Newsletter

A Publication of the Dan Patch Historical Society

Number 21

SPRING 2005

BRING THE DEPOT HOME



One of Savage's oldest building is not actually in Savage. The Dan Patch Historical Society is supporting the relocation of the Savage Depot back to downtown Savage. It would sit in a public square on the site where Dan Patch Liquor used to sit, directly across from where the original depot sat from 1880 to 1970. City leaders hope the depot can be moved from Murphy's landing in Shakopee to Savage in time to celebrate the 100th anniversary of the race in which Dan Patch broke the world record for running the mile in 1 minute 55 seconds. The record was set at the Minnesota State Fair in 1906 and was not broken for 54 years. Please read the donation envelope insert in the newsletter and consider a generous donation to our cause.

ENVISION SAVAGE



The city embarked on a 6 month visioning process to develop a 15 year vision for the city. As an introduction to each community meeting and focus group, the city staff prepared an 8 minute history of the city. Much of the footage is on 'Dan Patch and Mr. Savage'. (If you have not seen it, check it out at the library.) One of the outcomes of those meetings and a community survey was that the citizens supported the return of the depot and a way to promote the city's rich history.

.....
:
:
:
.....
www.danpatch.com

Mission Statement: The Dan Patch Historical Society was formed for the purpose of collection, preservation and dissemination of historical knowledge and artifacts about the horse, Dan Patch, and its owner, M. W. Savage.

A TRAIN NAMED AFTER A RACEHORSE!

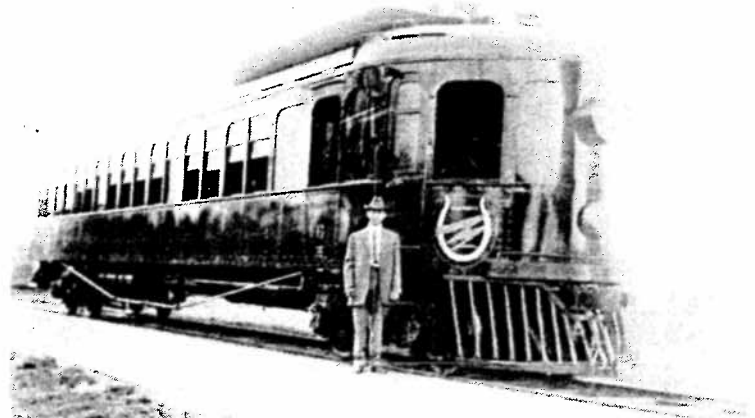
Classic Train magazine Summer 2005 issue has an article about the MN & S railroad. Upon reading further and viewing the pictures, one quickly realizes that the MN & S unusual history began at the turn of the 20th century when Col. Marion W. Savage, a Minneapolis livestock feed and mail order tycoon, built a farm along the Minnesota River south of Minneapolis in what is now the city of Savage. He acquired a stable of racehorses to promote his International Stock Food Farm. He purchased the famous pacing horse Dan Patch and toured with the horse riding in his own car with white uniformed grooms.

To connect his properties, Mr. Savage entered the railroad business, becoming a co-founder in 1907 of MStPR & DETC. He soon shortened the name to "Dan Patch Electric Lines" - a more marketable label, designed a logo - a horseshoe superimposed on a lightning bolt. The line was named after a racehorse! The railroad began as a passenger only interurban and evolved as a freight-hauler.

Dan Patch Lines business boomed for a few years. Also called the Dan Patch Electric Line which despite its name, was never electrified, it used steam for freight and pioneer gas electric power for its interurban passenger service. Service began at 54th and Nicollet in Minneapolis and went to Savage's new Antler's Park in Lakeville. Mr. Savage was 60 years too early with his vision and in 1916 the railroad went into receivership. In an ironic twist, Col. Savage and his great horse died within hours of each other in July 1916. MN & S, formed that year, acquired the Dan Patch Lines at an auction on August 16, 1916. The MN & S (Minneapolis, Northfield and Southern) became a profitable 87 mile Minneapolis - Northfield local industrial pike and was acquired by the Soo Line in 1982.

(For the entire article and many photos, check the files at the Savage Library, Heritage Room)

**CONGRATULATIONS TO OUR
PRESIDENT
Jens Bohn - 2004 SAVAGE Business
Person of the Year!**



New Members

**Paul Judy - Land O'Lakes, FL
Charles Couch - Kingsdown, KS**

Donations

**Dan Patch with sulkey statue do-
nated by Thelma & Bob Galespie**



DAN PATCH DAYS
A Winning Celebration!

DAN PATCH DAYS

A WINNING CELEBRATION



The annual Dan Patch Days to be held on **June 24, 25, 26, 2005** celebrates over 16 years of community fun. Dan Patch Days, Inc., a group of citizens, plan the event **FREE** to the public. Dan Patch Historical Society partners with them to enhance the historical aspect the event in the following ways:

- * Designs and sells the commemorative button and prize for winning drawing
 - 1st prize of intarsia of M.W. Savage with Dan Patch
 - 2nd prize commemorative blanket
- * Sponsors the "find the Horseshoe" by providing the historical clues to assist in finding the horseshoe hidden somewhere in the city on public property. Provides the \$100 to the winner plus an extra \$100 if they have a button. The winner rides in the parade. This is our 10th hunt!
- * Booth on Saturday from noon until 8 PM with memorabilia and members present to answer questions. We will again have the cutout of Dan Patch at the 1906 MN State Fair and the chance to have your photo taken in the cutout for a nominal charge.
- * A special feature will be descendants (as verified by the Trotters Association) of **Dan Patch** near our booth.
- * Descendants of Marion Savage plan to be in the parade on Sunday.



Presentation of Story Boards, by the Dan Patch Historical Society, to Kathleen Klehr, Director of the Scott County Historical Society.



**From
the
President**

With so much happening with Dan Patch Days and the depot, it is hard to determine what to write about.

We sold our supply of storyboards and have reordered them. We sold a storyboard of Dan to Backstretch Chocolate Shop in Venice, Florida so if you are in the area, stop in and check it out. Consider ordering one each of

Dan and Mr. Savage to frame for your office or home. At \$75 each they are a bargain for such a professional looking piece of history.

The horse Expo in April was well attended at the Minnesota Fairgrounds and we had copies of our newsletter, membership form and Dan Patch Days flyers at the Minnesota Harness Racing booth.

Remember to check our webpage at <http://www.danpatch.com> for information about us. I am surprised that we have over 800 hits since we went live in January. We got a couple of inquiries a week on e-mail about items for sale. If they are not interested in donating to us, we usually refer them to e-bay.

We recently learned that Joan Mondale was appointed to the Citizens Advisory Stamp Committee so we sent her a letter about our application for a Dan Patch stamp in 2006. She called last week to assure us that we did everything right with our application and we now need to just wait for a decision.

Don't forget to put Dan Patch Days on your calendar and be sure to purchase a commemorative button for \$3 and be eligible for some great prizes. The grand prize again is an intarsia rendering of M.W. Savage and Dan Patch donated by local resident Jim Ryan valued at several hundred dollars.

See you at Dan Patch Days,

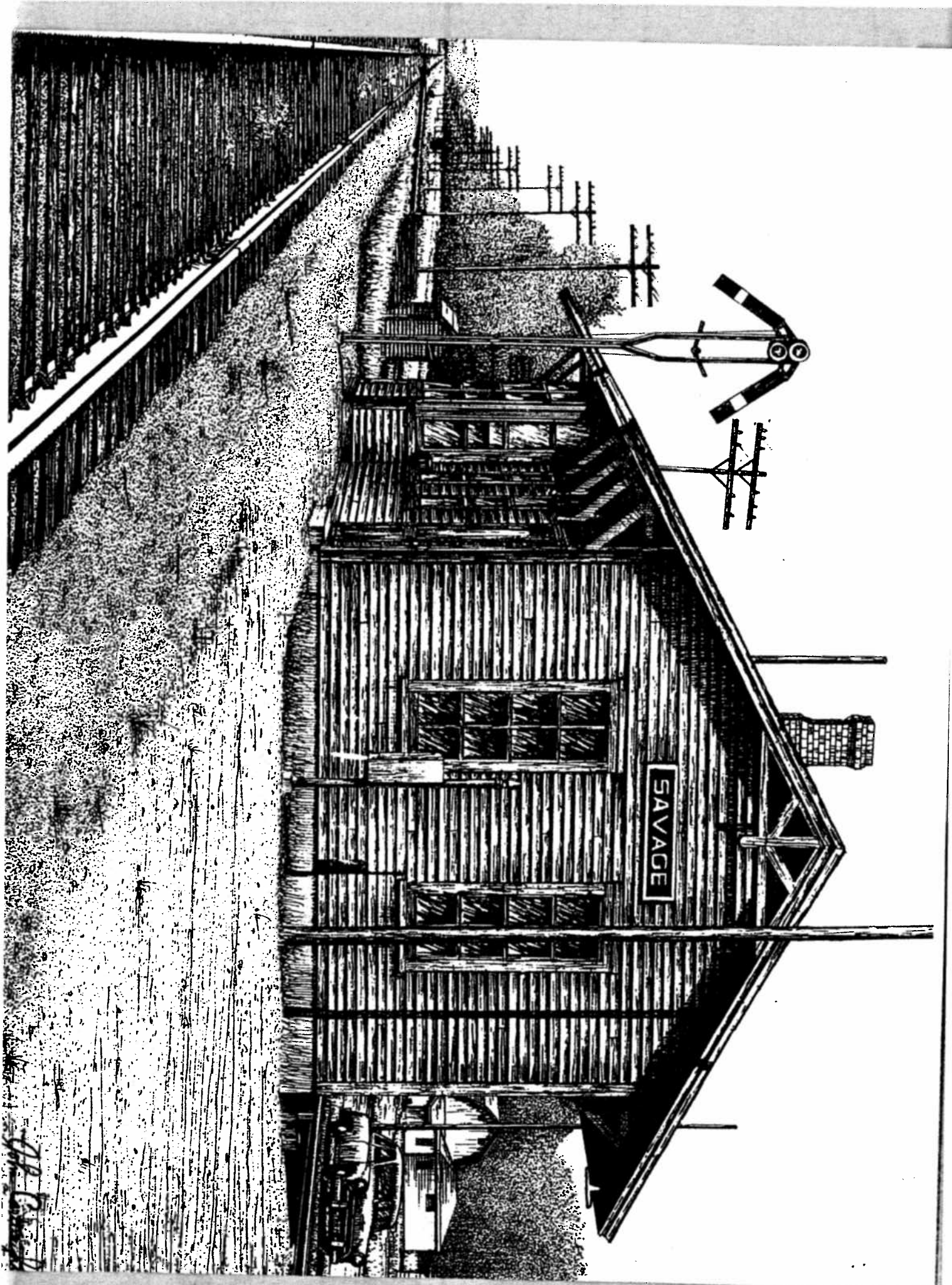
Jens

**DAN PATCH
HISTORICAL SOCIETY
P.O. Box 1:55
Savage, MN 55378**

PLACE
STAMP
HERE

BOARD OF DIRECTORS

| | |
|---|---|
| President: Jens Bohn 12385 Ottawa Ave.S Savage, MN 55378 | Rob Fendler 4839 W. 124th Street Savage, MN 55378 |
| Vice President: George Augustinack Box 6 Savage, MN 55378 | Art Suel 14500 Alabama Ave. S Savage, MN 55378 |
| Treasurer: Joe Cade 14141 Glendale Road Savage, MN 55378 | Dena Merwin 5676 132nd Street West Savage, MN 55378 |
| Secretary: Janet Williams 4664 Bohn Court Savage, MN 55378 | Newsletter Editor: Dena Merwin 5676 132nd Street West Savage, MN 55378 |



SAVAGE

John Campbell